



Adtran

FIBER ACCESS PLATFORMS

Unlocking the Multi-Gigabit Edge

Why SD-Access?

With an open, microservices architecture approach, you are afforded the freedom to choose best-of-breed elements. This expedites the creation of new customer applications and the introduction of more sustainable technologies while reducing overhead costs, network inefficiencies, and time-to-market delays.

Addresses Business Imperatives



Increases Service Velocity

Become more agile as you battle to grow market share and increase ARPU with new services revenue.



Lowers Integration Costs

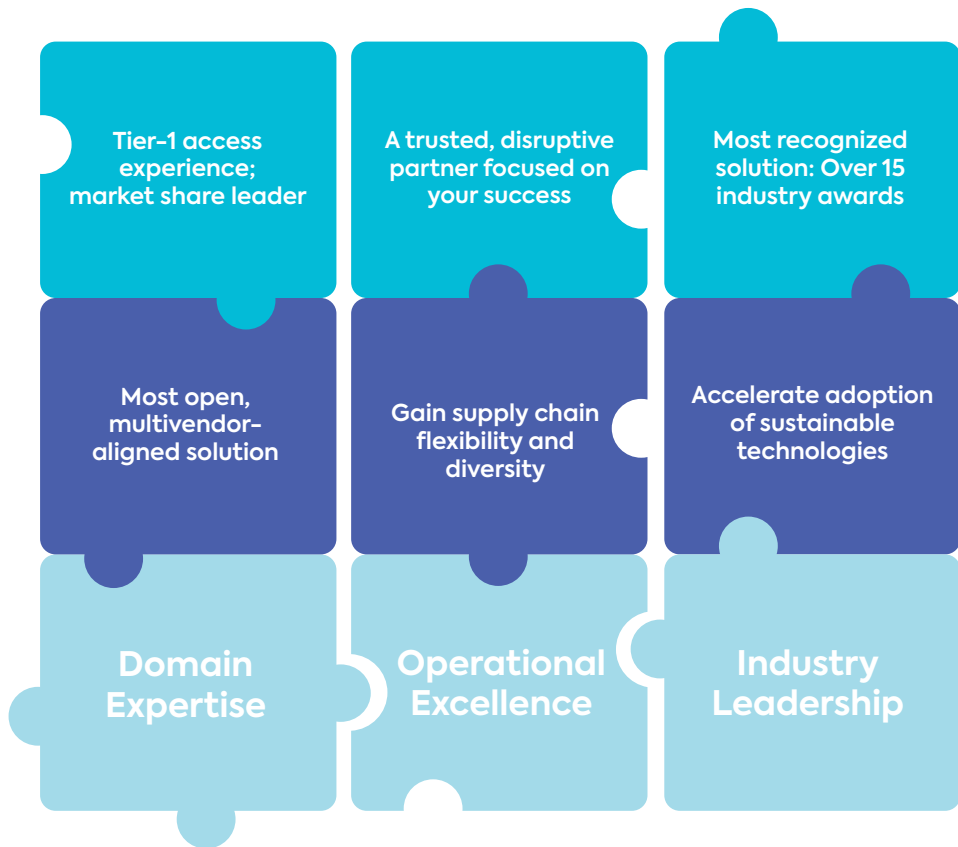
Lower your cost to build, operate, and innovate with your network.



Streamlines Operations

Reduce your service provisioning times, human error rates, and IT complexity.

Why Adtran SD-Access?



Broad Operator Use Cases

Wholesale Services

Support alternative network operators' business Ethernet and retail services



Carrier Ethernet

Deliver SLA-based services to your business and backhaul customers



Retail Multiplay

Deliver multi-gigabit internet optionally combined with managed Wi-Fi, voice, and/or video



Adtran Solution Advantages



Open, Disaggregated Architecture

- Modular, vendor-neutral
- Deploy best-of-breed components



End-to-End Programmability

- Rapidly expand and adapt network capability
- Reduce IT complexity and time-to-market



Leading Service Scalability

- Linear cost scaling 10 to 10,000 PONs
- Lowest start-up costs, rapid scaling



Virtualization Ready

- Support local or cloud control plane
- Reduce cost and time to modify network

Open, Disaggregated Architecture

The ability to build your network using best-of-breed components affords greater service creation opportunities and rapidly onboard the latest innovations, like lower power chipsets or a more innovative OS.



45 - 60%
Greener
Environmentally
Focused



42 - 66%
Smaller
Street Cabinet
Ready



20 - 60%
Easier
Common Software
Image



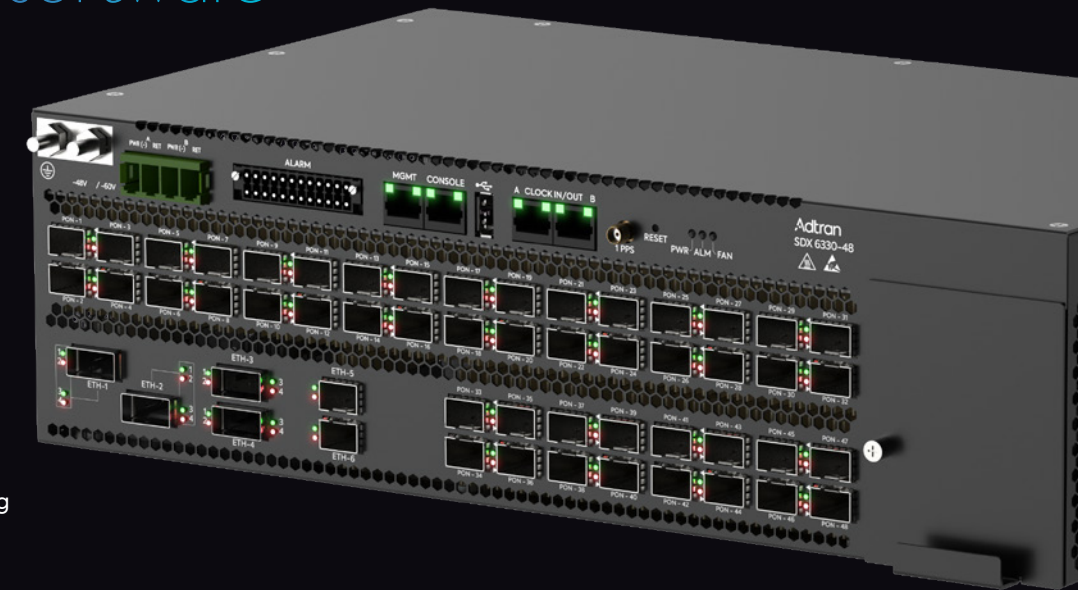
19%
Faster
Higher
Throughput



55%
Lighter
Single-Person
Install

Supporting a virtualized control plane running on open-source software

Adtran SDX Series



Adtran Solution Advantages

- Offers distributed hardware, software, and network control
- Supports white box boot and software environments
- Accelerates the adoption of sustainable technologies
- Integrates natively into any open-source SDN controller

Increases Network ROI

- Adopt flexible network dimensioning via control plane separation
- Mix and match best-of-breed components, seamless upgrade
- Deploy any open-source SDN controller or any open-networking architecture
- Realize more sustainable, lower power technologies



Cloud CO

SEBA

VOLTHA

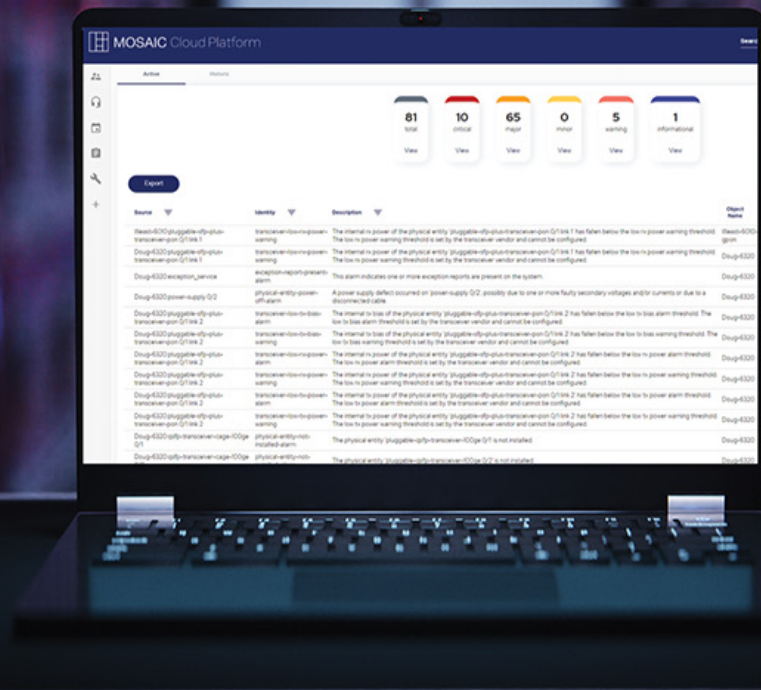
ONIE



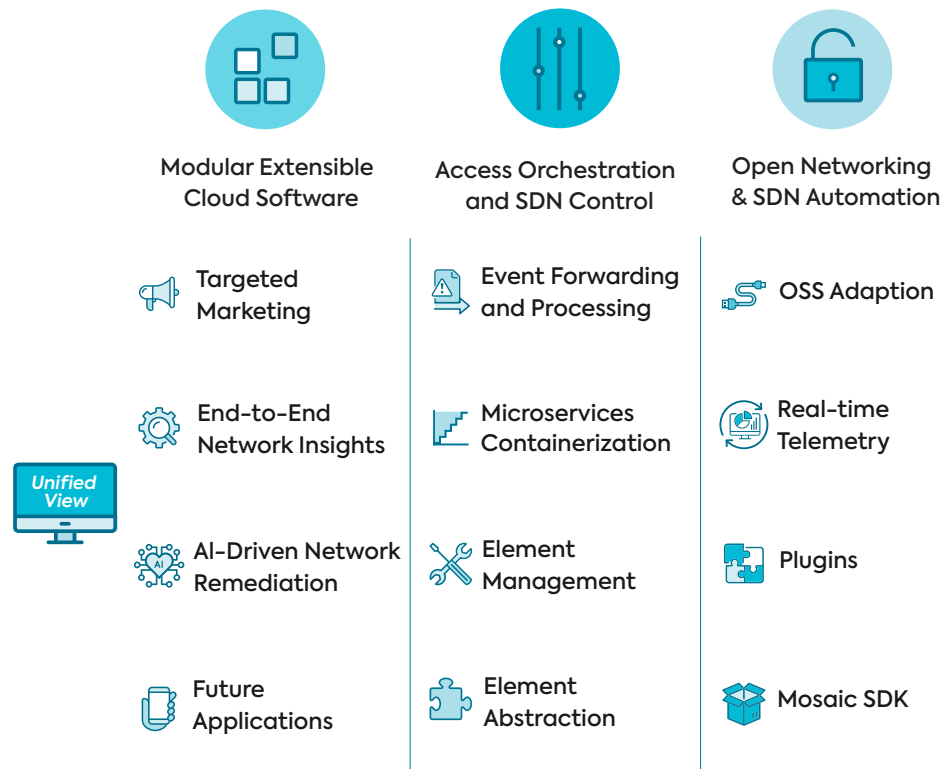
End-to-End Programmability

Improve network profitability by eliminating IT complexity, expanding network capability, and simplifying service delivery by implementing modern, automated, orchestration.

Operator Selectable, Business Case Adaptable



Adtran Mosaic Software Suite



Vendor-neutral, technology agnostic

Key Operator Benefits

Reduce Time to Revenue

- Streamline service creation and network expansion by operating a unified, multivendor SaaS platform

Simplify Service Delivery

- Lower the cost per customer add by automating service delivery across both Adtran and third-party network elements

Expand Network Capability

- Increase ROI by incorporating emerging network automation, real-time intelligence, and optimization applications

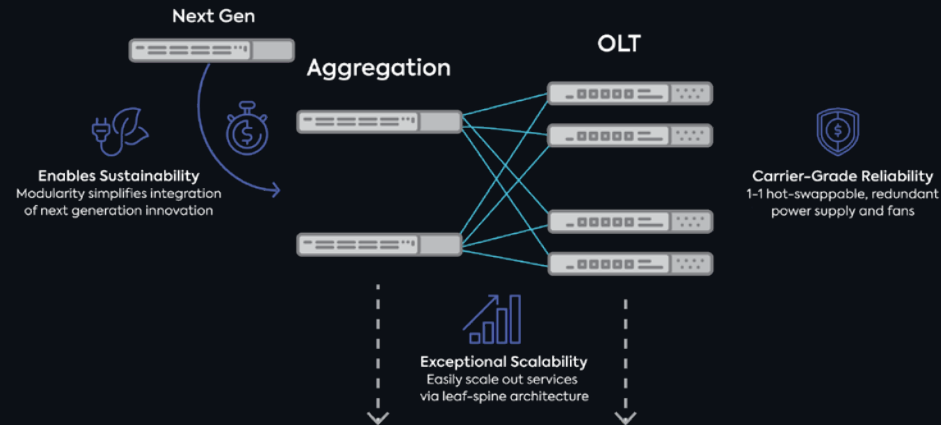
Network Programmability Enablers

- End-to-end path provisioning
- End-to-end service delivery automation
- Abstracted service-level APIs
- Streaming telemetry and elastic storage

Leading Service Scalability

Benefiting from the widest range of pay-as-you-grow deployment variants operating within a leaf-spine architecture affords service providers the lowest start-up cost regardless of density while enabling rapid response to both network demand or market opportunity.

Adtran Network Architecture



ILL7178

Broadest SD-Access Portfolio

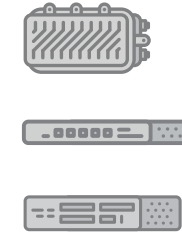
SDX 8000 Aggregation Switches

- Temperature hardened and ETSI depth options
- Many Nx100G, 10G and 1G options
- Fully programmable via NETCONF/YANG



SDX 6000 OLTs

- Temp hardened, fully sealed and low power/port variants
- 4, 16, and 48x Combo PON and GPON variants
- Supports BBF CloudCO and ONF SEBA reference architectures



SDX 600 ONTs

- Industry-leading voice, data, and video capabilities
- GPON, XGS-PON and 10G-EPON technologies
- Range of single family, business and multi-dwelling variants

Right-Sizing Your Deployments

Dense Urban

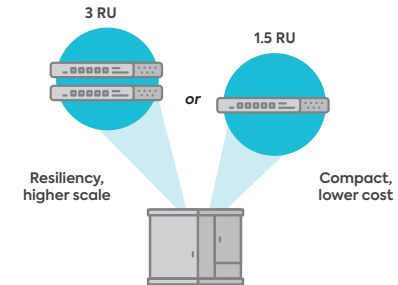
Central Office



> 100K Subscribers

Suburban

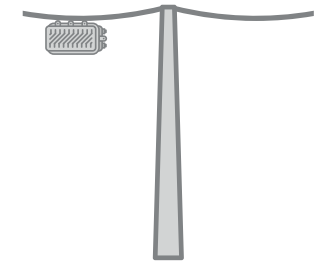
Street Cabinet



Broadest Range of Service Launch Points

Rural

Remote, Strand-mount



< 1K Subscribers

ILL7179

Virtualization Ready

Containerized, microservices architectures and control plane virtualization reduces the cost and the time needed to modify the network. Adtran uniquely allow OLT functions to run locally or in the cloud depending on the specific operator use case.



Local, Embedded Compute



Cloud, External Compute



PON Control and User Plane Separation

Adtran Microservices Architecture



vOMCI

Modular vOLT Applications

Adtran sdxOS

Open, Linux-based OS

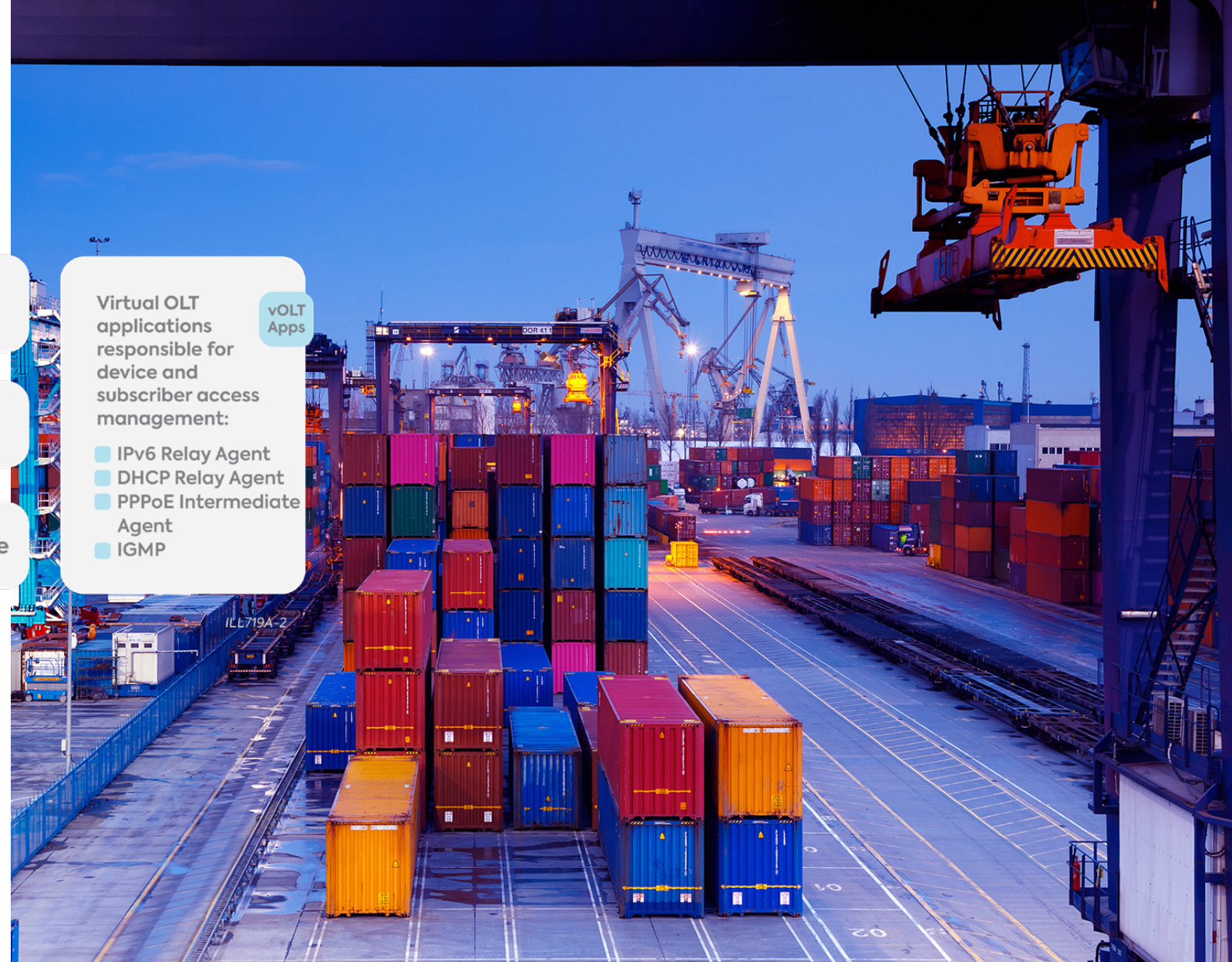


Open, Disaggregated Hardware

Virtual OLT applications responsible for device and subscriber access management:

vOLT Apps

- IPv6 Relay Agent
- DHCP Relay Agent
- PPPoE Intermediate Agent
- IGMP





Unlocking the
Multi-Gigabit Edge



**Adtran Corporate
Headquarters**
901 Explorer Boulevard
Huntsville, AL 35806
USA
adtran.com
sales@adtran.com

Adtran Europe Limited
Building 2200 Basing View
Basingstoke RG-21 4EQ, UK
contact@adtran.com

Adtran GmbH
Jean-Monnet-Straße 4,
10557 Berlin, Germany
kontakt@adtran.com

Adtran Networks Pty. Limited
L5 330 Collins Street
Melbourne, Victoria, 3000
Australia
australia@adtran.com

AD11296C Sept Copyright © 2022 Adtran, Inc. All rights reserved. ADTRAN believes the information in this publication to be accurate as of publication date, and is not responsible for error. Specifications subject to change without notice. ADTRAN and the other trademarks listed at www.adtran.com/trademarks are registered trademarks of ADTRAN, Inc. or its affiliates in various countries. All other trademarks mentioned in this document are the property of their respective owners.

ADTRAN warranty duration and entitlements vary by product and geography. For specific warranty information, visit www.adtran.com/warranty

ADTRAN products may be subject to U.S. export controls and other trade restrictions. Any export, re-export, or transfer of the products contrary to law is prohibited. For more information regarding exportation of ADTRAN items (e.g. commodities, technology, software), please visit www.adtran.com/exportlicense.